



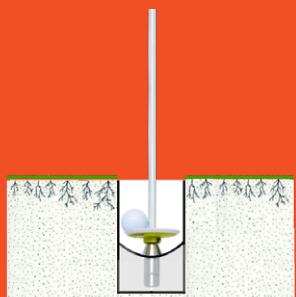
PICKCUP

Pitchfix[®]
•com

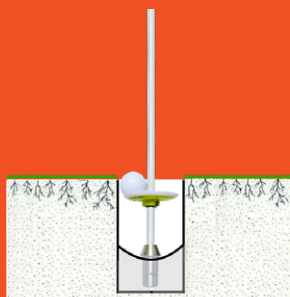
THE PICKCUP IS DESIGNED TO PROTECT THE HOLE EDGE WHEN LEAVING THE PIN IN!

The PickCup is a new product that's been developed in response to the recent rule change that now permits players to leave the flag in the hole when putting, a rule change designed to help speed up play but which has resulted in unexpected damage to the hole edge caused by players not removing the flagstick when retrieving their ball.

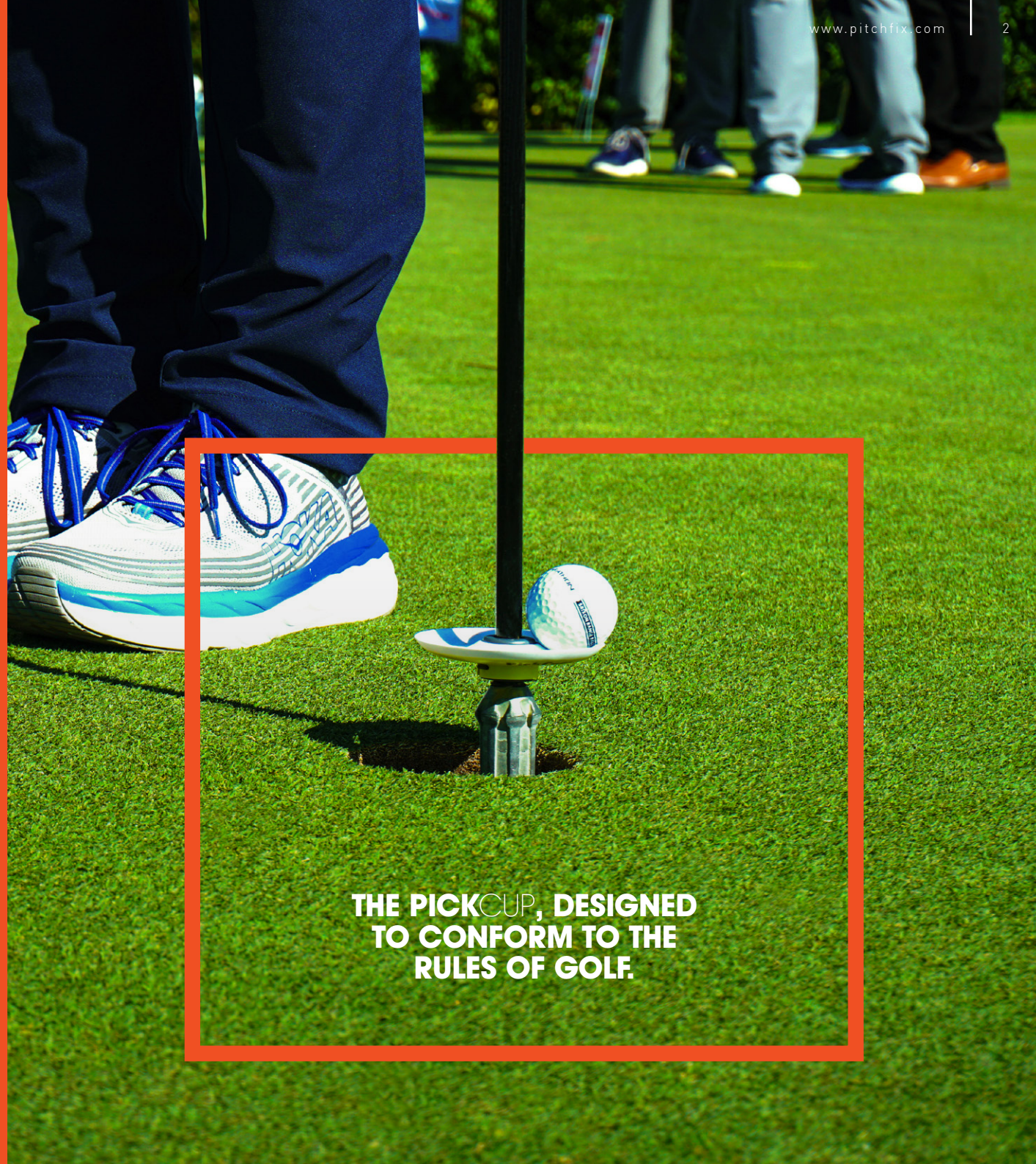
The PickCup sits in the hole, attached to the flagstick to collect your golf ball. The standard application is attached to the base next to the ferrule, but some clubs are creating shallow holes using PickCup during the Covid-19 pandemic to eliminate the need to touch the flagstick when collecting your ball and reducing the spread of infections.



Option 1:
Standard position



Option 2:
Covid-19 position



**THE PICKCUP, DESIGNED
TO CONFORM TO THE
RULES OF GOLF.**

SO HOW DOES IT WORK?

After holing out, when a player gets to the hole, if they gently lift the flagstick from the hole they'll find the the PickCup has collected their ball from the hole and it's easy for them to retrieve without grabbing inside with their fingers or putter.

It saves time, is easier than bending over to collect a ball from the hole and as custodians of better green care, we're keen to stress that by removing the ball using this method rather than sticking your hand or putter in the hole, it helps prevent damage to the edge of the hole too.

The PickCup is made from weatherproof polyurethane plastic with a flex-rubber edge that helps to protect the edge of the hole, and is fitted with a universal adapter so that it can be easily attached to any conventional flagstick.

Unlike competing products the *PickCup conforms to the Rules of Golf*, meaning that it can remain in place during competitions too.

1) The PickCup can be secured below the 3" depth requirement from the height of the lip so not to interfere with a ball in play.


2) The PickCup is easy to attach and remove but when attached remains in a static position on the flagstick, again so not to interfere with a ball in play.

In addition to this, the PickCup has a patent pending design that incorporates a rubber perimeter to the cup, which helps protect the lip from damage when being removed from the hole but also protects the green if the flagstick is laid down on the surface.

The PickCup has been developed with the style and attention to detail that you would expect and it feels and performs likes a quality piece of equipment.

**WE CALL IT
'CONTACT-LESS PUTTING!'**





**A NEW BALL RETRIEVAL
SYSTEM THAT'S HELPING
CLUBS REDUCE THE SPREAD
OF INFECTION.**

STOP PRESS: COVID-19 UPDATE

AN ADAPTABLE BALL RETRIEVAL SYSTEM THAT'S HELPING CLUBS REDUCE THE SPREAD OF INFECTION.

During these unprecedented times the product development team at Pitchfix quickly recognised that the PickCup could be adjusted by customers to create a shallow hole which would enable players to continue to play as normal, and holeout, but collect their ball without needing to touch the flagstick at all.

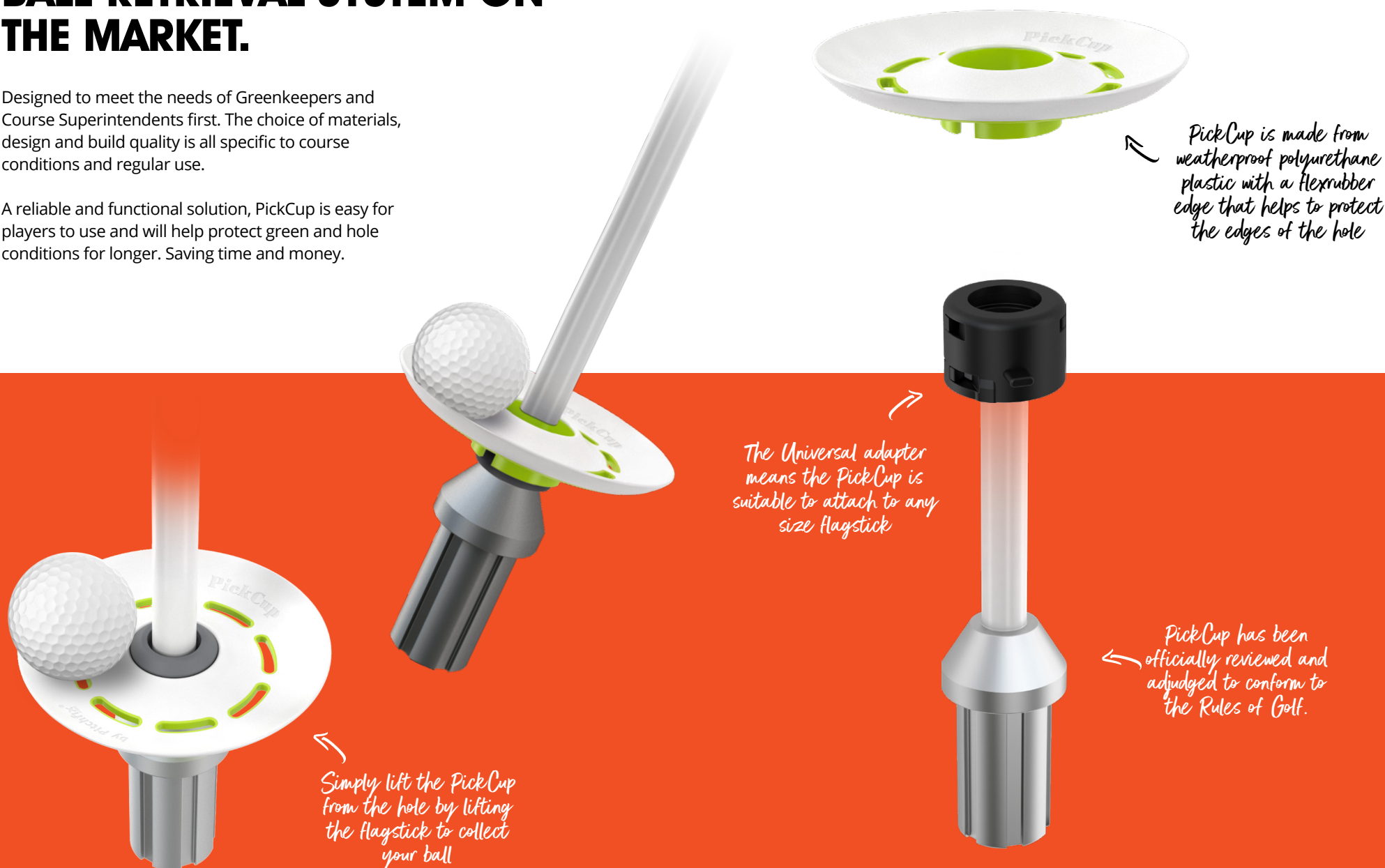
This practise has been quickly adopted by many clubs all over the world as a factor which might allow closed clubs to reopen sooner. By reducing the need to touch the flagstick, the PickCup immediately prevents an obvious area of risk where constant contact with the flagstick by players could risk spreading infection unnecessarily.

The fact remains that PickCup will help to lower maintenance costs for clubs now and in the future, but this new advice may also enable clubs using PickCup to open sooner and help keep players safe on course.

THIS IS THE MOST COMPLETE BALL-RETRIEVAL SYSTEM ON THE MARKET.

Designed to meet the needs of Greenkeepers and Course Superintendents first. The choice of materials, design and build quality is all specific to course conditions and regular use.

A reliable and functional solution, PickCup is easy for players to use and will help protect green and hole conditions for longer. Saving time and money.



PickCup has been officially reviewed and adjudged to conform to the Rules of Golf.

CONFORMS TO THE RULES OF GOLF

PickCup has been specifically designed to 'conform to the Rules of Golf'. This is a specific accreditation, permitted by the custodians of the game in Europe and the US and is only assigned to products that have been submitted for testing and are deemed appropriate for use in competitive golf at all levels.

Rule 13.2a(2), "There will no longer be a penalty if a ball played from the putting green hits a flagstick left in the hole." which was updated in 2019 means that players may leave the flagstick in the hole when putting, a measure aimed at helping to speed up play.

In response PickCup and PickCup Promo was developed to help players retrieve their ball without damaging the edge of the hole, a concern raised by Greenkeepers and Course Superintendents.

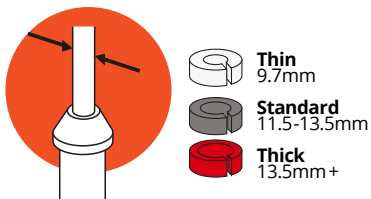
Section 8 of the 2020 Equipment Rules states that any accessory needs to be 'fixed' in position on the flagstick, a specific depth from the opening of the hole, so not to interfere with play. Many alternatives fail in this respect and therefore are not permitted for use during competition golf at any level. PickCup & PickCup Promo is fixed directly to the flagstick once installed and therefore can be described as 'conforming to the Rules of Golf'.

The unique design does allow for the PickCup & PickCup Promo to remain in place, or be transferred with ease when required. The materials used on the construction are weatherproof and ensure that the PickCup & PickCup Promo will continue to perform all season long.



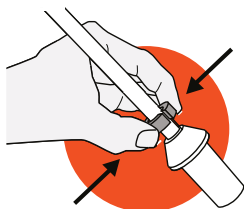
STEP 1

- A.** Measure the diameter of the flagstick.
- B.** Select a rubber that fits with the flagstick diameter.



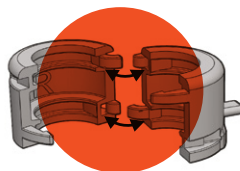
STEP 2

Fold rubber ring over flagstick.
Place about 6mm above ferrule.



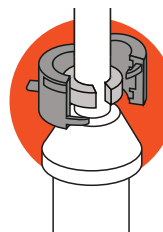
STEP 3

Align two halves of cupholder.



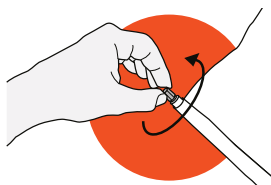
STEP 4

Align opening of cupholder and opening of rubber ring.



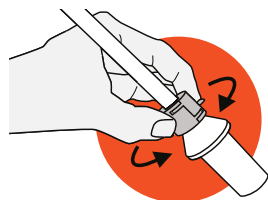
STEP 6

Unscrew nut on the top end of the flagstick.



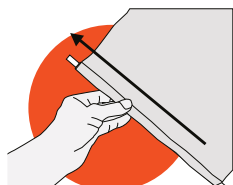
STEP 5

Press firmly together until clicks together in locked position.
note; make sure bottom of cupholder halves sit on top of ferrule!



STEP 7

Remove flag.



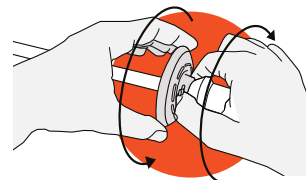
STEP 8

Slide disk over flagstick.



STEP 9

Slide cup over cupholder and turn into locked position.



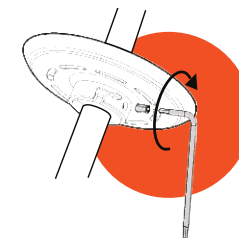
INSTALLING THE PICKCUP IS EASY!

Contained in your packs is all you need to attach the PickCup to your flagstick.

We are one of the only brands in the world that can legally claim that their solution 'Conforms to the Rules of Golf' as set out by the R&A and USGA. Thus the PickCup is approved to be left in place during competition golf too.

STEP 10

Re-assemble flag and top nut, then lock with grub screw.



GET IN TOUCH WITH US.

The PickCup comes in two variants, the Standard and Promo versions. If you're looking for a cost effective, durable and legal solution for protecting your putting surfaces and cups, get in touch with one of our team today.

Get in touch to find out more or to make a sales enquiry.

info@pitchfixUSA.com
www.pitchfixUSA.com

Pitchfix[®]
com

Follow us on twitter & instagram for more ideas, product updates and golf fun!

